



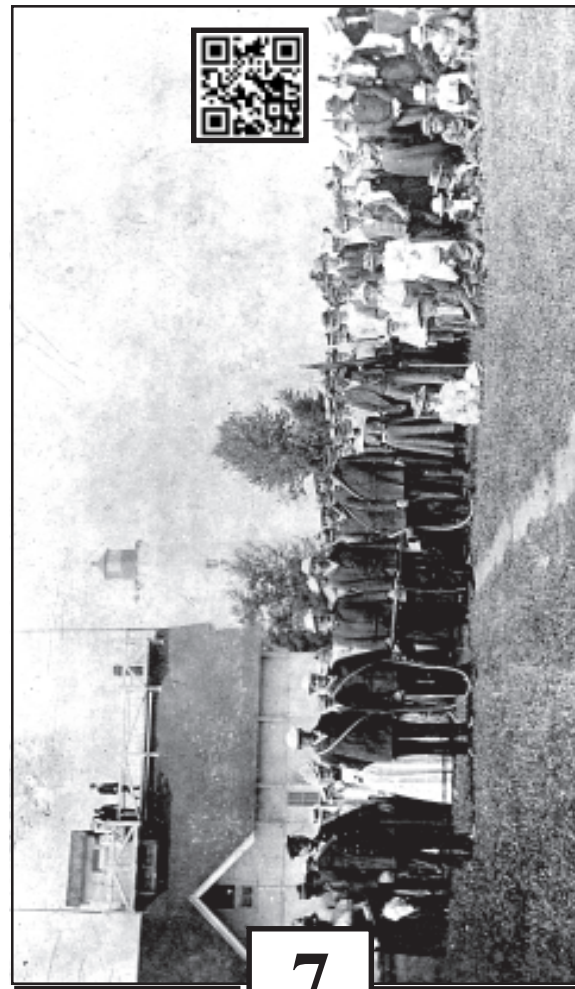
5

The nine man surf boat was stored in a shed and launched from a ramp on the beach. Both were relocated over the years as lake levels rose and fell. Surfmen practiced launching and righting the heavy boats in all weather.



6

The main section of the Life Saving Station housed the wagon that carried the life saving equipment. It was dispatched to aid ships wrecked in the water. A Lyle gun shot a lifeline over the ships rigging so as to pull a heavy duty “Zip line” from shore. The harness was a pair of “breeches” attached to a life ring for survivors to climb into.



7

The grounds south of the Life Saving Station were used for drilling with the breeches buoy equipment. Large crowds of townspeople came to the point to watch the cannon firing. Practice often included “rescuing a lady” from the crowd. Picnickers took the passenger train to the flag stop station on Point Road.

STURGEON POINT LIGHTHOUSE’S Then and Now Tour

Tour the Sturgeon Point Lighthouse grounds by following the numbered brown trail markers. Face the marker number and view a historical photo for History on the Spot. The map shows the locations of seven stops.

Alcona Historical Society
P.O. Box 174
Harrisville, MI 48740
www.alconahistoricalsociety.com



To Become A Member of the Alcona Historical Society, Send your name, address, and membership dues to:

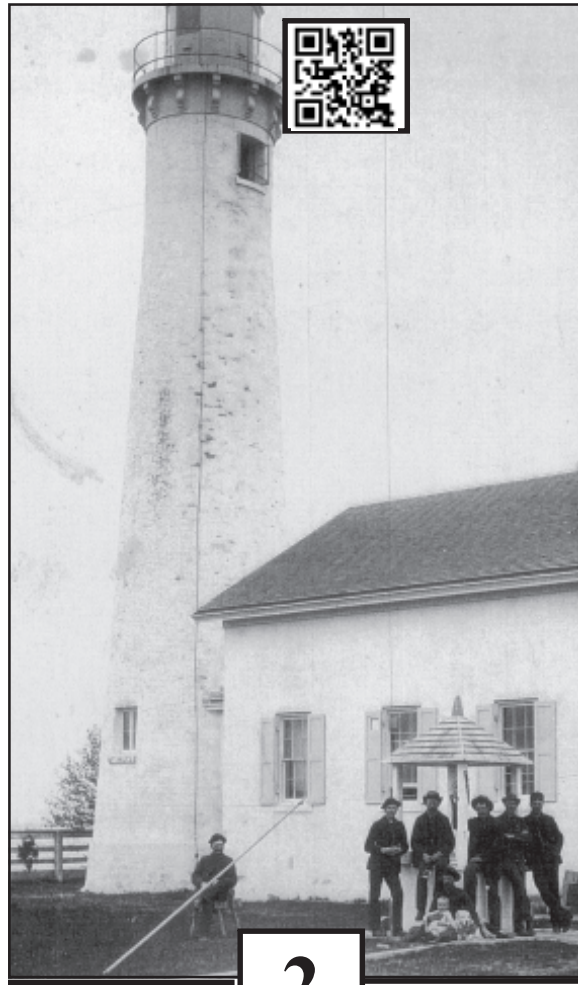
Membership Chairman
Alcona Historical Society
P.O. Box 174
Harrisville, MI 48740

Membership Categories (Annually):
Individual: \$20.00
Family: \$35.00
Sponsor: \$55.00



1

The Bernice D. was a gasoline powered fishing boat from nearby Black River. It is similar to this boat in a 1930s photograph. The men from Harrisville are gathering stray logs from commercial booms that were towed by tugboat from Canada to Bay City, Mich. sawmills.



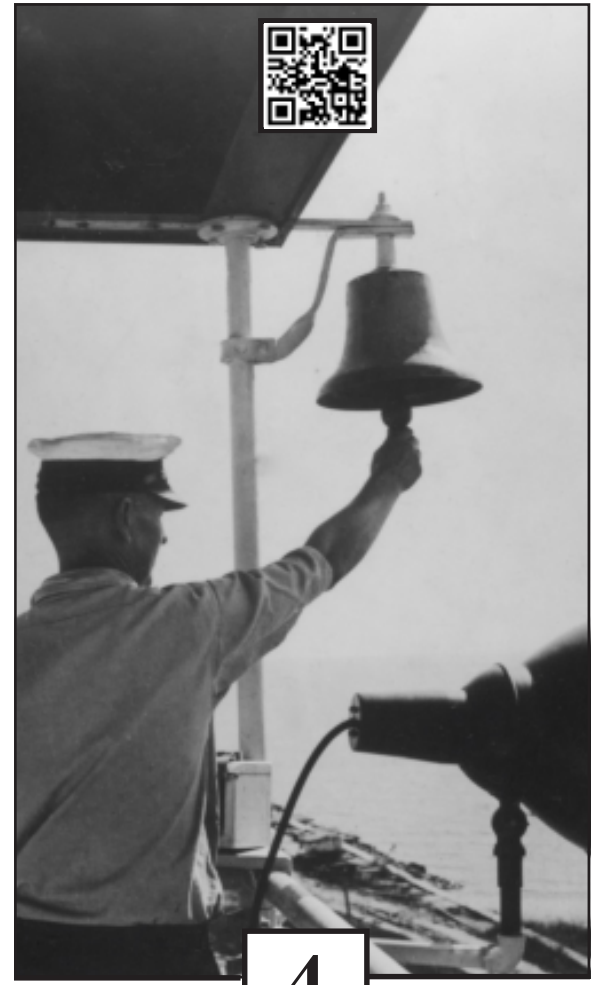
2

The first lighthouse well was hand dug and used a bucket on a rope. Boardwalks connected the keepers quarters to the out buildings and the Life Saving Station. They were later paved with concrete that survives today. Around 1900 the grounds were maintained with a rotary push lawn mower.



3

You are here. In the distance is the baseball field that Hazen "Kiki" Cuyler, Baseball Hall of Famer, learned the game. Cuyler's father was a member of the lifesaving crew stationed in the foreground buildings. Local teams played here during 4th of July celebrations to large crowds.



4

The U.S. Coast Guard continued keeping watch for ships in distress from a watchtower separate from the lighthouse. This 1930s photograph shows the spotlight and bell that would alert the rest of the crew to action. The bell is now under the pavilion for you to ring.